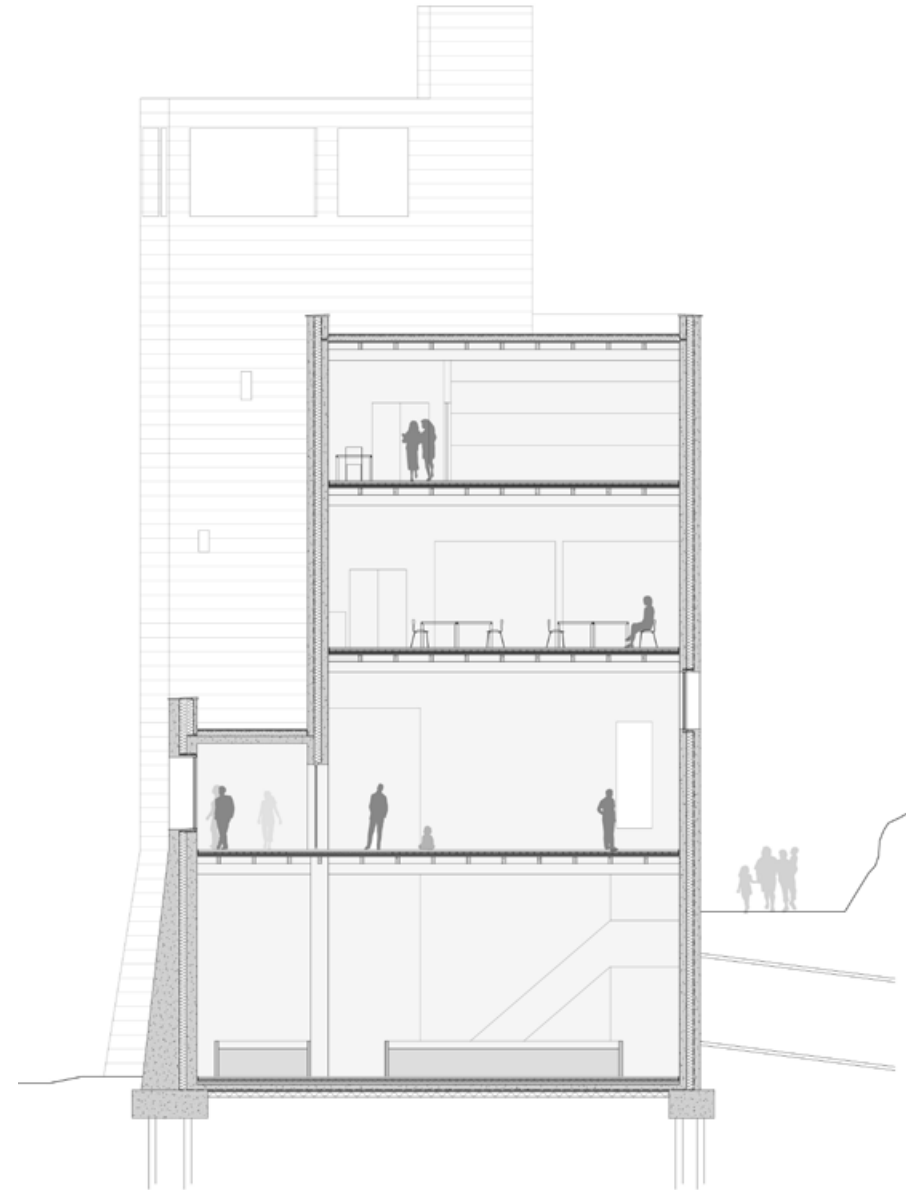
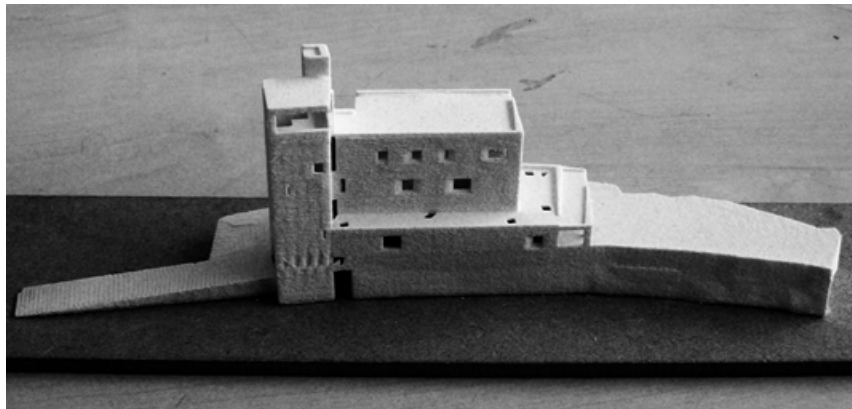
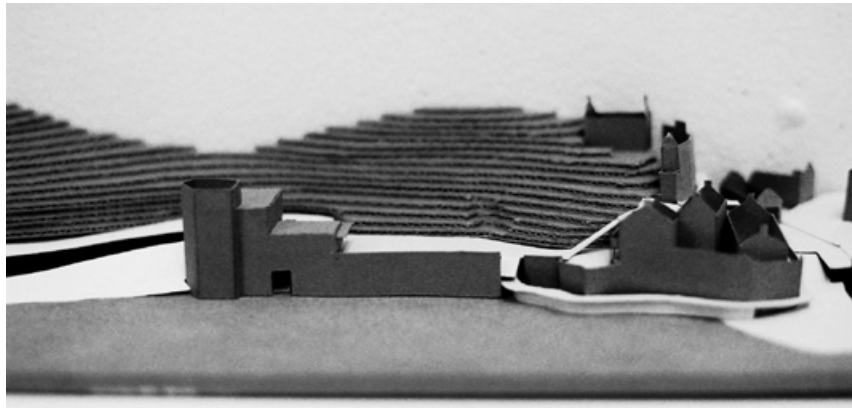


PROJECT 1

Robin Hood's Bay: Coastal Erosion Centre

Models showing progression of project, from concept, scheme in context through to a more finished design.

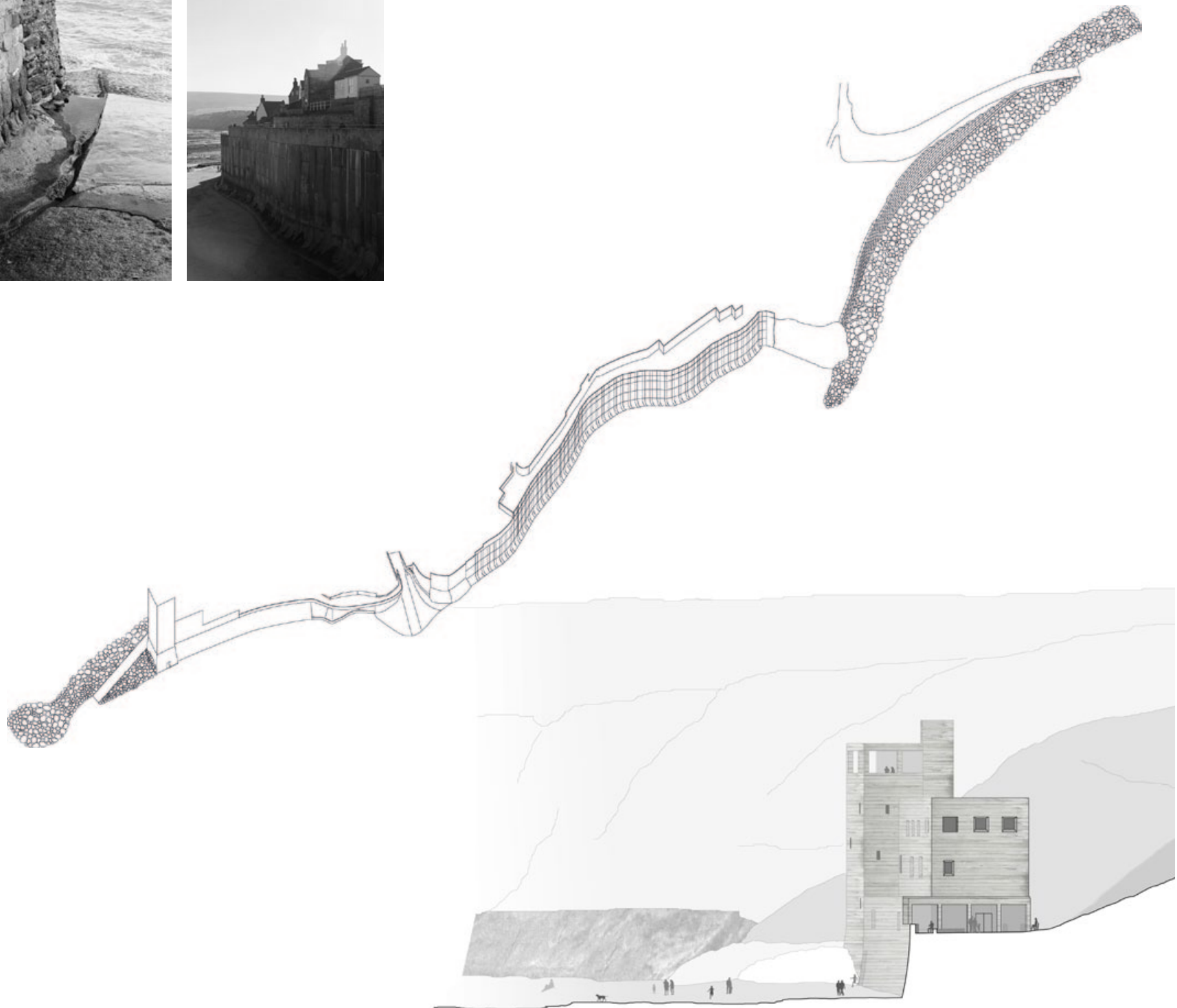
Constructional section showing vertical arrangement of program. The ground level with Climate change exhibition space sits above the tank room, where researchers model the effects of the sea in wave tanks. Above the exhibition room is a classroom for visiting school groups and offices. The tower provides a viewing platform over the bay.



PROJECT 1

Robin Hood's Bay: Coastal Erosion Centre

The project forms a part of Robin Hood's Bay's sea defences. A damaged part of the wall is replaced, and the centre forms part of this new wall.

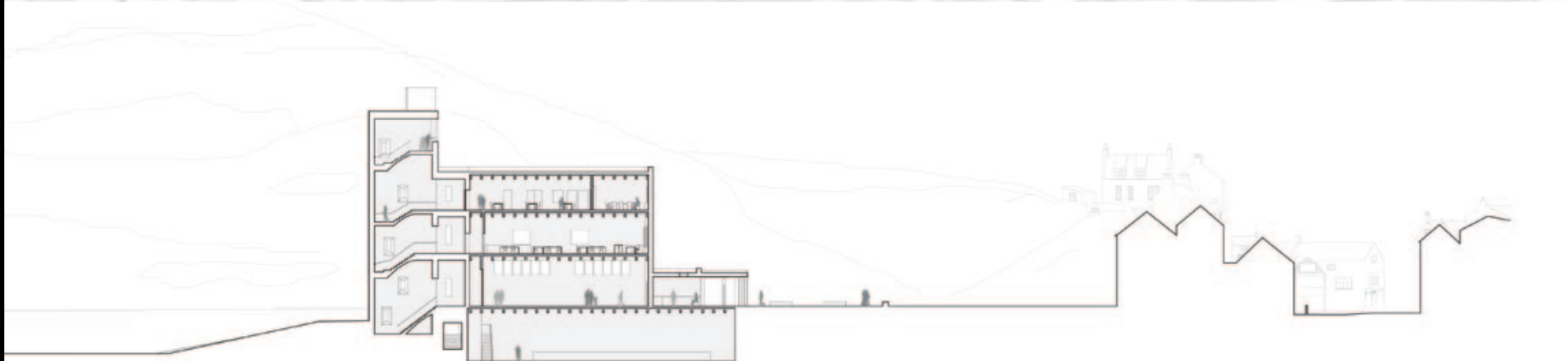


PROJECT 1

Robin Hood's Bay: Coastal Erosion Centre

Plan and section showing project in relation to Robin Hood's bay and the sea wall.

The existing platform above the sea wall is enlarged and linked better to the Dock, the key public space in Robin Hood's Bay, by a new route running in front of the buildings at the Dock.

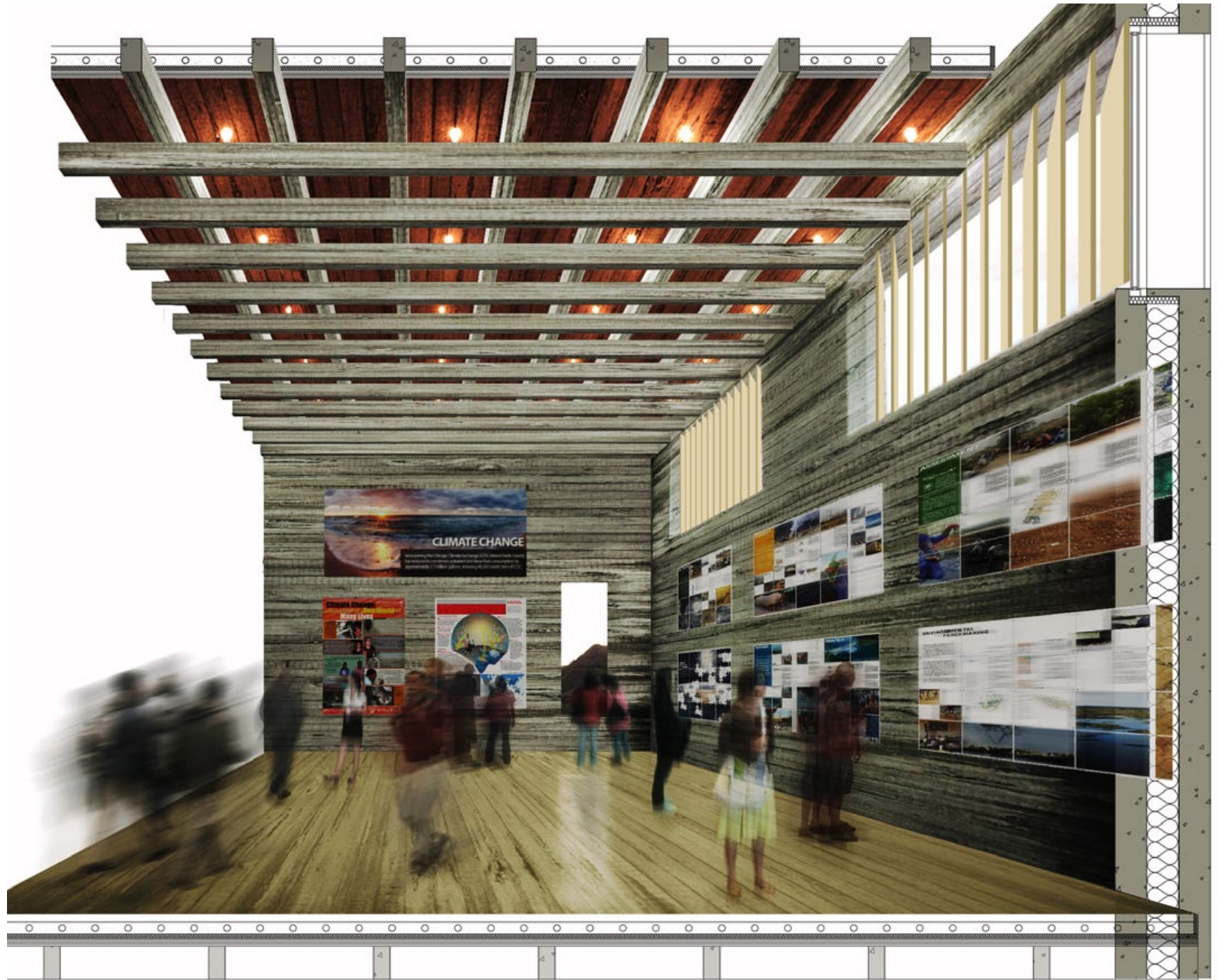


PROJECT 1

Robin Hood's Bay: Coastal Erosion Centre

Exhibition Space

Primarily for exhibitions on climate change, relating the work done at the centre, and the coastal erosion of the North Yorkshire Coast to the global issue of climate change.

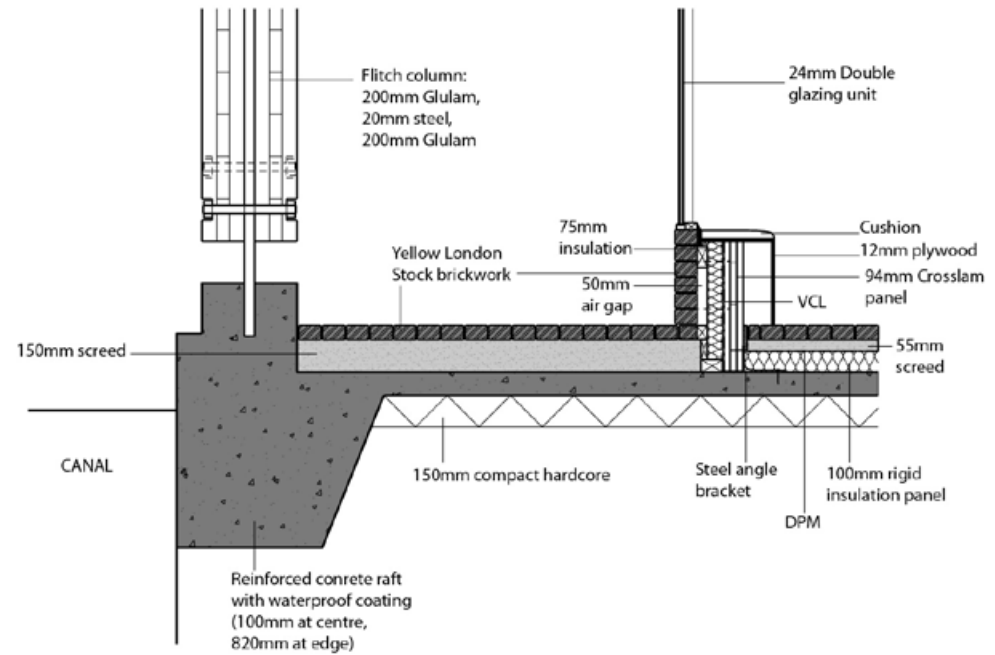
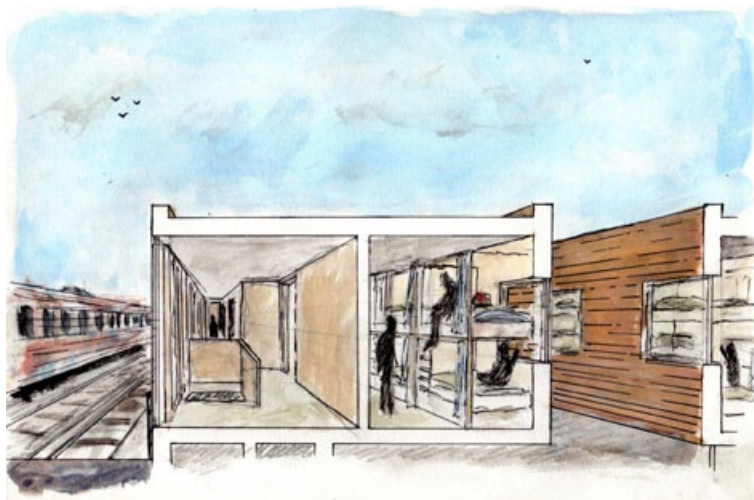


PROJECT 2

Southwark: Hostel

Perspective section showing relationship between railway, corridor, and rooms on the 2nd floor.

Axonometric of hostel showing arrangement of the three floors

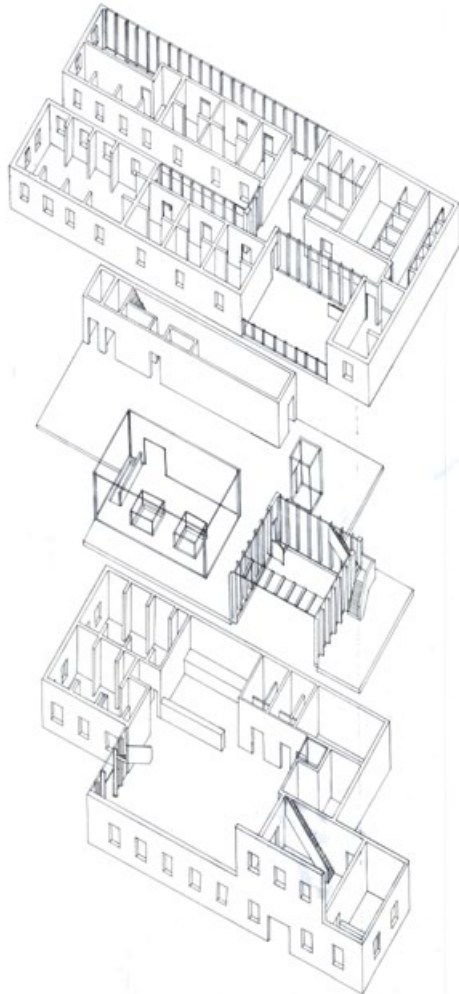


PROJECT 3

Regent's Canal: Dalyte Art Gallery

Construction detail at the canal edge.

Project 'Manifesto'- concepts put into the existing site. Making use of the existing building, putting artwork into a variety of industrial/residential spaces. Provision of a workshop and living space for a resident artist.



PROJECT 3

Regent's Canal:
Dalyte Art Gallery

Dalyte House is extended with the addition of a large tower housing most of the gallery in a variety of spaces that make use of different scales, lighting conditions and views either way down the canal. Including a top lit gallery on the top floor and a very high north facing gallery at the canal level that faces across the canal to a pavilion containing the artist's residence and an exhibition space for a single piece of artwork.

